

Once you've been prescribed ENBREL, *ENBREL Support*[®] is here to help you.



For more than 15 years, we've helped people like you with the personalized support and resources they need for their prescribed ENBREL treatment.

Financial concerns? *ENBREL Support*[®] offers assistance.

- **Co-pay card***: Eligible, commercially insured patients may pay as little as \$5 per refill with the Enbrel[®] Co-Pay Card.
- **Financial assistance**: Other options may be available for those without commercial insurance. Call us to learn more.

*Terms, conditions, and program maximums apply. See enbrelsupport.com for full eligibility details. Other restrictions may apply. This program is not open to patients receiving prescription reimbursement under any federal, state, or government-funded healthcare program. Not valid where prohibited by law.

Still have questions about the injection process? We'll give you one-on-one help.

- **Supplemental support**: After your doctor has trained you on how to take ENBREL, an *ENBREL Nurse Partner*[™] can help answer questions and provide supplemental injection support at home or over the phone.[†]
- **Online videos**[‡]: Check out helpful demonstration videos at injectingenbrel.com.
- **Live help**: Call 1-888-4ENBREL (1-888-436-2735) for help from an *ENBREL Nurse Partner*[™].

[†]*ENBREL Nurse Partners*[™] are nurses by training, but they are not part of your treatment team or an extension of your doctor's office. *ENBREL Nurse Partners*[™] do not inject patients with ENBREL. You will be referred to your doctor's office for clinical advice.

[‡]These videos are to supplement the information you got from your doctor on how to take ENBREL. They do not replace the Instructions for Use. Please consult the Instructions for Use when using ENBREL, and ask your doctor if you have any questions.

Ready to begin treatment? We can provide a roadmap.

- **A guided journey**: You'll receive a roadmap that will help you to begin your treatment and establish a routine. If you want a sneak peek, you can download it at enbrel.com/epi.

Please see accompanying Prescribing Information, including Boxed WARNING and Medication Guide.



Ready to enroll? Turn this card over to learn how.

ENBREL Support
AMANDA



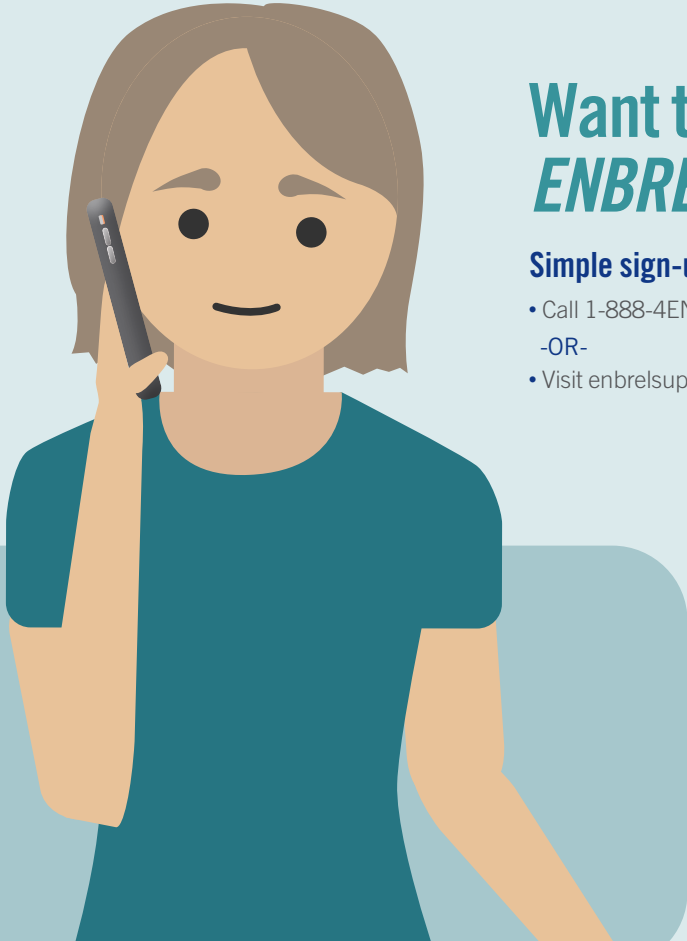
Want to get started with *ENBREL Support*[®]?

Simple sign-up

- Call 1-888-4ENBREL
-OR-
- Visit enbrelsupport.com

Know when it's us

- **Scan and save.** Simply scan this code with your phone's camera and save us to your contacts so you know when we are calling.



AMGEN[®]

Manufactured by Immunex Corporation
Marketed by Amgen Inc.
Thousand Oaks, CA 91320
www.enbrel.com
©2020 Amgen Inc. All rights reserved.
USA-916-81571



ENBREL is a registered
trademark of Amgen Inc.