



DISCOVER WHAT **ENBREL** CAN DO FOR YOU

IMPORTANT SAFETY CONSIDERATIONS

Serious infections have happened in patients taking ENBREL. These infections include tuberculosis (TB) and infections caused by viruses, fungi, or bacteria that have spread throughout the body. Some patients have died from these infections. Lymphoma and other cancers (some fatal) have been reported in patients taking ENBREL and other TNF blockers

Please see additional Important Safety Information on pages 34-35 and [click here for Prescribing Information and Medication Guide.](#)

WHAT ENBREL TREATS

Moderate to severe

RHEUMATOID ARTHRITIS (RA)

ENBREL is indicated for reducing signs and symptoms, keeping joint damage from getting worse, and improving physical function in patients with moderately to severely active RA. ENBREL can be taken with methotrexate or used alone.

PSORIATIC ARTHRITIS (PsA)

ENBREL is indicated for reducing signs and symptoms, keeping joint damage from getting worse, and improving physical function in patients with PsA. ENBREL can be used with or without methotrexate.

ANKYLOSING SPONDYLITIS (AS)

ENBREL is indicated for reducing signs and symptoms in patients with active AS.

Moderate to severe

POLYARTICULAR JUVENILE IDIOPATHIC ARTHRITIS (JIA)

ENBREL is indicated for reducing signs and symptoms of moderate to severe polyarticular JIA in children ages 2 years and older.



IMPORTANT SAFETY CONSIDERATIONS

ENBREL can lower the ability of your immune system to fight infections. Serious infections have happened in patients taking ENBREL. These infections include tuberculosis (TB) and other infections that can spread throughout your body. Your healthcare provider should test you for TB before starting ENBREL and should monitor you closely for signs and symptoms of TB during treatment with ENBREL.

Please see additional Important Safety Information on pages 34-35 and click here for [Prescribing Information](#) and [Medication Guide](#).



ENBREL MAKES A DIFFERENCE

A HISTORY OF HELPING

For over 20 years, rheumatologists have prescribed ENBREL, beginning with the approval to treat moderate to severe rheumatoid arthritis. Since then, ENBREL has been approved and prescribed to treat other conditions.

ENBREL has treated over 1 million patients since 1998.*

HOW SYMPTOMS START

Your immune system creates a **protein called TNF** (tumor necrosis factor) to help your body fight off infections and diseases.

But when the body makes too much TNF, **inflammation** can occur in different parts of the body such as the hands, knees, ankles, and even along the spine.

This inflammation causes **swelling, stiffness and joint pain—which can lead to permanent joint damage** in moderate to severe Rheumatoid Arthritis (RA) and Psoriatic Arthritis (PsA).

For people with PsA, it can also lead to **patches of thick, red areas with silvery type scales called plaques**.

HOW ENBREL WORKS

ENBREL is a type of medicine known as a biologic (**a treatment made from living things, like cells**).

It's designed to **attach to TNF proteins** and help block their activity.

By lessening the number of TNF in your body, **ENBREL helps reduce symptoms brought on by RA, PsA, AS, and JIA**.

Because ENBREL works on the immune system, it can make it hard to fight infections.



*Estimated based on IQVIA data: NPA Nov '98-Dec '10, PLD claims Jan '11-Dec '20, NPA new-to-brand Aug '14-Apr '21

IMPORTANT SAFETY CONSIDERATIONS

ENBREL can lower the ability of your immune system to fight infections. Serious infections have happened in patients taking ENBREL. These infections include tuberculosis (TB) and other infections that can spread throughout your body. Your healthcare provider should test you for TB before starting ENBREL and should monitor you closely for signs and symptoms of TB during treatment with ENBREL.

Please see additional Important Safety Information on pages 34-35 and click here for [Prescribing Information](#) and [Medication Guide](#).

UNDERSTANDING RA

WHY DOES RA HAPPEN?

When you have rheumatoid arthritis, your immune system creates too much of a protein called TNF, which attacks healthy joints and tissues. This causes inflammation in the body and specifically in joints—most commonly in hands, knees, and feet.

COMMON SIGNS AND SYMPTOMS OF RA:

- Joint pain, swelling, and stiffness
- Difficulty bending joints
- Tiredness

WHO DOES RA AFFECT?



About
1.5 million
people in the
United States



**People of
all ages**

(typically starting
between 35 and 50
years old)



Mostly women,

but men too

(nearly 3x as
many women have
RA as men)



LIVING WITH RA

When you live with moderate to severe RA, you know simple things can become a challenge. Whether it's getting out of bed and dressing in the morning or making dinner with the family at night. So if your bad days seem to happen more and more, it may be time to talk to your doctor about other treatment options, like ENBREL.

Your results may vary.

IMPORTANT SAFETY CONSIDERATIONS

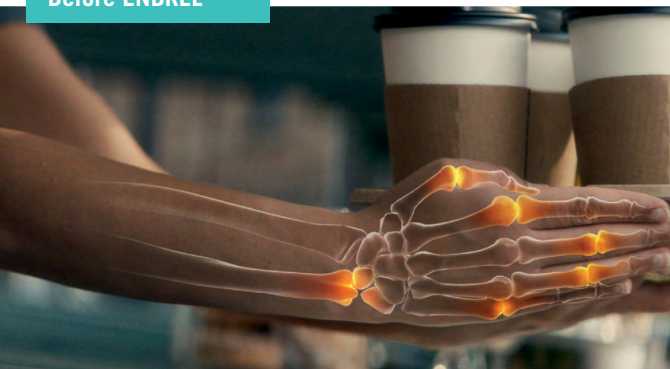
ENBREL can lower the ability of your immune system to fight infections. Serious infections have happened in patients taking ENBREL. These infections include tuberculosis (TB) and other infections that can spread throughout your body. Your healthcare provider should test you for TB before starting ENBREL and should monitor you closely for signs and symptoms of TB during treatment with ENBREL.

Please see additional Important Safety Information on pages 34-35 and click here for [Prescribing Information](#) and [Medication Guide](#).

HOW ENBREL HELPS PEOPLE WITH MODERATE TO SEVERE RA

When your immune system makes too much TNF, it can cause inflammation in your joints. **ENBREL helps fight the inflammation that causes joint pain and permanent joint damage—and can also help stop joint damage from getting worse. Plus, ENBREL helps reduce fatigue.** With ENBREL, performing everyday tasks may become less painful so you can join in on more activities that you enjoy.

Before ENBREL



After ENBREL



Results may vary.

DID YOU KNOW ?

Your doctor may decide you can take ENBREL by itself without methotrexate.

IMPORTANT SAFETY CONSIDERATIONS

ENBREL can lower the ability of your immune system to fight infections. Serious infections have happened in patients taking ENBREL. These infections include tuberculosis (TB) and other infections that can spread throughout your body. Your healthcare provider should test you for TB before starting ENBREL and should monitor you closely for signs and symptoms of TB during treatment with ENBREL.

Please see additional Important Safety Information on pages 34-35 and click here for [Prescribing Information](#) and [Medication Guide](#).



FOR ADULTS WITH MODERATE TO SEVERE RHEUMATOID ARTHRITIS (RA), ENBREL CAN WORK FAST

ENBREL works differently with each person. Some results are seen quickly, and other times it may take a little longer. Consistency with taking ENBREL will get the best results possible for you. A medical study* has shown:

IN AS EARLY AS 1–2 WEEKS joint pain was relieved and stiffness and swelling went down

AT 3 MONTHS 2 out of 3 people felt less pain and stiffness

AND AT 6 MONTHS those people who saw an improvement at 3 months continued to see even greater improvements in their condition



“I’ve been given a gift, and I’m truly, truly grateful for it.”

— Brandy, taking ENBREL for moderate to severe rheumatoid arthritis (RA). Your results may vary.



DID YOU KNOW ?

In a medical study, **55%** of people who were still taking ENBREL for 5 years had no additional joint damage.

*Your results may vary.

IMPORTANT SAFETY CONSIDERATIONS

ENBREL can lower the ability of your immune system to fight infections. Serious infections have happened in patients taking ENBREL. These infections include tuberculosis (TB) and other infections that can spread throughout your body. Your healthcare provider should test you for TB before starting ENBREL and should monitor you closely for signs and symptoms of TB during treatment with ENBREL.

Please see additional Important Safety Information on pages 34-35 and click here for [Prescribing Information](#) and [Medication Guide](#).

UNDERSTANDING PsA

WHAT IS PsA?

When you have psoriatic arthritis (PsA), your immune system creates too much of a protein called TNF. That extra TNF creates inflammation in your joints and can give you joint pain, swelling, and stiffness. **But the inflammation can also affect your skin—causing patches of thick, red areas with silvery type scales called plaques.** With PsA, usually skin symptoms start first, then the joint pain—which mostly affects the hands, knees, ankles, or feet.

COMMON SYMPTOMS OF PsA:

- Patches of red, thick skin with silvery scales (called “plaques”)
- Joint pain, swelling, and stiffness
- Changes in the nail, such as pitting (small depressions on the surface of the nail)

WHO DOES PsA AFFECT?



It's estimated that up to

2.4 million people

in the United States have PsA.



Men and women of all ages

(with symptoms typically starting between 30 and 50 years old)

LIVING WITH PsA

When you live with PsA, you know simple things can become a challenge. It can hurt to do simple things like brush your teeth or exercise. You may even wear long-sleeve shirts (even when it's hot out) to hide your skin. So if your bad days seem to happen more and more, it may be time to talk to your doctor about other treatment options, like ENBREL.



Joint pain can be a sign of permanent joint damage, which can get worse over time.

IMPORTANT SAFETY CONSIDERATIONS

ENBREL can lower the ability of your immune system to fight infections. Serious infections have happened in patients taking ENBREL. These infections include tuberculosis (TB) and other infections that can spread throughout your body. Your healthcare provider should test you for TB before starting ENBREL and should monitor you closely for signs and symptoms of TB during treatment with ENBREL.

Please see additional Important Safety Information on pages 34-35 and click here for [Prescribing Information](#) and [Medication Guide](#).

HOW ENBREL HELPS PEOPLE WITH PsA

By helping block the activity of TNF proteins, ENBREL helps fight the inflammation that causes joint pain, permanent joint damage, and plaques. ENBREL can also help stop joint damage from getting worse. And with clearer skin and less joint pain and stiffness, you might be ready to say “yes” to more activities.



“I really had this overwhelming sense that I got a second chance.”

— Matt, taking ENBREL for psoriatic arthritis (PsA).
Your results may vary.

Before ENBREL



After ENBREL



ENBREL CAN WORK QUICKLY.

People respond differently to ENBREL—and that’s natural. Some people may see results quickly, while others need to stick with it longer for results. A medical study* has shown:

- **IN AS EARLY AS 4 WEEKS** some people had reduced signs and symptoms (red, scaly patches of skin and joint pain, stiffness, and swelling began to improve)
- **AT 6 MONTHS** nearly half (47%) of people had at least 50% improvement in skin symptoms
- **AND AT 2 YEARS** most people who continued taking ENBREL showed little or no additional joint damage

DID YOU KNOW ?

About **70%** of people with PsA experienced skin symptoms before joint pain and swelling.*

*Your results may vary.

IMPORTANT SAFETY CONSIDERATIONS

ENBREL can lower the ability of your immune system to fight infections. Serious infections have happened in patients taking ENBREL. These infections include tuberculosis (TB) and other infections that can spread throughout your body. Your healthcare provider should test you for TB before starting ENBREL and should monitor you closely for signs and symptoms of TB during treatment with ENBREL.

Please see additional Important Safety Information on pages 34-35 and click here for [Prescribing Information](#) and [Medication Guide](#).

UNDERSTANDING AS

WHAT IS AS?

Ankylosing spondylitis (AS) is a type of arthritis that leads to pain and stiffness in your spine. It happens when your immune system makes too much of a protein called TNF. The extra TNF causes inflammation in your body. **With AS, the inflammation generally starts in your back, but can spread to other parts of your body.**

COMMON SYMPTOMS OF AS:

- Lower back pain that is worse after rest or sleeping
- Morning stiffness and pain in the back, neck, shoulders, or hips
- Limited range of motion (stiffness and limited ability to move your joints)
- Tiredness

WHO DOES AS AFFECT?



About
378,000
people in the
United States



20-30

Typically starts
to develop
between 20 to 30
years of age

(mostly men, but
women as well)



Those with a
family history
of AS



LIVING WITH AS

When you live with AS, each moment can be a challenge. Whether it's looking over your shoulder in the car or getting up out of a chair at work. So if you're looking for less symptoms in your days, it may be time to talk to your doctor about ENBREL.

IMPORTANT SAFETY CONSIDERATIONS

ENBREL can lower the ability of your immune system to fight infections. Serious infections have happened in patients taking ENBREL. These infections include tuberculosis (TB) and other infections that can spread throughout your body. Your healthcare provider should test you for TB before starting ENBREL and should monitor you closely for signs and symptoms of TB during treatment with ENBREL.

Please see additional Important Safety Information on pages 34-35 and click here for [Prescribing Information](#) and [Medication Guide](#).

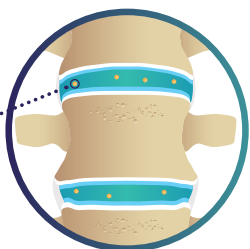


HOW ENBREL HELPS PEOPLE WITH AS

ENBREL is proven to help relieve back pain, swelling, and stiffness from AS by blocking some of the overproduced TNF proteins created by your immune system. This can also help improve your range of motion and your ability to move your joints.

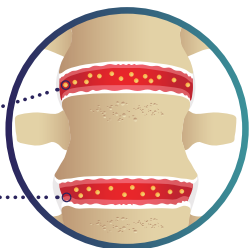
For illustrative purposes only.

Normal amount of TNF



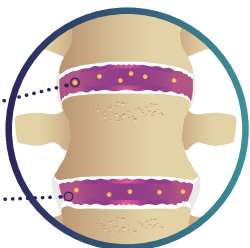
Too much TNF

Inflammation



Reduced amount of TNF with ENBREL treatment

Less inflammation



WHAT RESULTS CAN I EXPECT?

ENBREL works with your body and not all bodies are the same. Some people may see results quickly, while others, if they stick with the treatment, may see them later. A medical study* has shown:

- **AT 12 WEEKS** most people (60%) had reduced back pain and stiffness
- **AND AT 6 MONTHS** 3 out of 5 people felt less back pain, swelling, and stiffness

*Your results may vary.

DID YOU KNOW ?

In 2003, ENBREL was the first biologic medicine approved by the FDA for AS.

IMPORTANT SAFETY CONSIDERATIONS

ENBREL may lower your ability to fight infections. Before starting ENBREL, your healthcare provider should test you for tuberculosis and discuss whether you've been to a region where certain fungal infections are common.

Please see additional Important Safety Information on pages 34-35 and click here for [Prescribing Information](#) and [Medication Guide](#).

UNDERSTANDING JIA

WHAT IS JIA?

Juvenile idiopathic arthritis (JIA) is the most common type of arthritis affecting children. It's a lifelong condition of the immune system. While the immune system is meant to protect your child, with JIA, it creates too many TNF proteins, which in turn, cause inflammation that attacks their healthy joints and tissues. **Polyarticular JIA affects 5 or more joints, with pain lasting for more than 6 weeks.**

COMMON SYMPTOMS OF JIA:

- Warm or tender joints
- Joint pain or stiffness, particularly in the morning or after resting
- Joint swelling

WHO DOES JIA AFFECT?

16
←

Children under
the age of 16*



Girls more
frequently than
boys



YOU, YOUR CHILD, AND JIA

As the parent of a child with moderate to severe polyarticular JIA, you know each day can be a struggle for you both, physically and emotionally. Your child's pain and stiffness can make it hard for them to do even routine activities, like brushing their teeth, dressing, or playing with friends. So if you're looking for a treatment that may help to significantly improve your child's symptoms, talk to their doctor about ENBREL.[†]

*ENBREL is for children 2 years of age and older with moderate to severe polyarticular JIA.

[†]Your child's results may vary.

IMPORTANT SAFETY CONSIDERATIONS

ENBREL can lower the ability of your immune system to fight infections. Some people have serious infections while taking ENBREL. These infections include tuberculosis (TB), and infections caused by viruses, fungi, or bacteria that spread throughout their body. Some people have died from these infections. There have been cases of unusual cancers, some resulting in death, in children and teenage patients who started using TNF-blocking agents at less than 18 years of age.

For children, teenagers, and adults taking TNF-blocker medicines, including Enbrel, the chances of getting lymphoma or other cancers may increase.

Please see additional Important Safety Information on pages 34-35 and click here for [Prescribing Information](#) and [Medication Guide](#).

HOW ENBREL HELPS KIDS WITH MODERATE TO SEVERE POLYARTICULAR JIA

ENBREL has been proven to help relieve the symptoms of moderate to severe polyarticular JIA in children. By blocking the extra TNF made by their immune system, your child can have less joint pain, swelling, or stiffness.

“After ENBREL, I could carry my books without my wrist aching.”

— Tori, taking ENBREL for moderate to severe polyarticular juvenile idiopathic arthritis (JIA). Your child’s results may vary.

Before ENBREL



After ENBREL



DID YOU KNOW ?

RESULTS WITH ENBREL

People respond to ENBREL at different rates. So some children may see results quickly, while others may need to stick with it longer for results. And a medical study* has shown:

- **IN AS EARLY AS 3 MONTHS**, nearly 3 out of 4 children had less pain, stiffness, and swelling
- **AT 7 MONTHS**, some children who improved at 3 months continued to improve for an additional 4 months while on ENBREL
- **AND AT 4 YEARS**, most children who improved and continued to take ENBREL were able to maintain their responses

*Your child’s results may vary.

ENBREL is injected just once a week, and, depending on your child’s weight, you and your child’s doctor can select from several injection options.

IMPORTANT SAFETY CONSIDERATIONS

ENBREL can lower the ability of your immune system to fight infections. Serious infections have happened in patients taking ENBREL. These infections include tuberculosis (TB) and other infections that can spread throughout your body. Your healthcare provider should test you for TB before starting ENBREL and should monitor you closely for signs and symptoms of TB during treatment with ENBREL.

Please see additional Important Safety Information on pages 34-35 and click here for [Prescribing Information](#) and [Medication Guide](#).

AutoTouch Connect® Autoinjector*

+ Embark® App

SEE IT

Follow the injection process from start to finish.

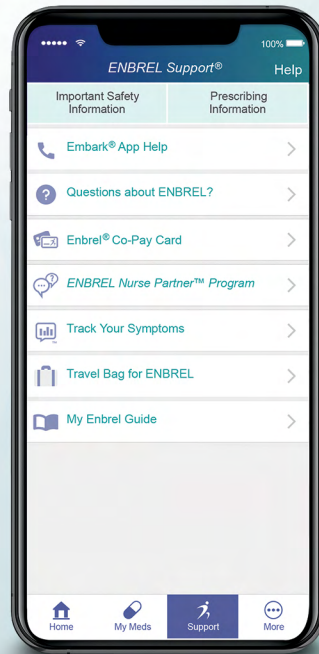
HEAR IT

Rings when your injection is complete.

TRACK IT

Bluetooth® technology lets you automatically track your injections when you pair with the Embark® App.

The AutoTouch Connect® autoinjector is not for use in children (ages 4-17) with chronic moderate to severe plaque psoriasis or JIA who weigh less than 138 lbs.



ENBREL Support® RESOURCES

Access financial support information, ENBREL medication information, and more.

ENROLL IN THE CO-PAY CARD†

For those who have qualified for the Co-Pay Card, they can view their remaining benefit and recent transaction history.

†Eligibility criteria and program limits apply. For full terms and conditions visit ENBREL.com/financial-support

MEDICATION REMINDERS

Helps you set reminders for ENBREL and other medications.

WHAT ELSE CAN YOU DO WITH THE EMBARK® APP?

Once you download the Embark® App, be sure to enroll in STATWISE™. ‡ STATWISE™ can show you patterns, changes, or improvements in your symptoms. Your personal experience is captured in a symptom chart, and can help you better understand your results with ENBREL. You can also access your STATWISE™ reports on the Embark® App to share with your doctor.

Please refer to the User Manual included with the AutoTouch Connect® autoinjector.

DOWNLOAD THE EMBARK® APP FOR FREE



Supported on iPad.

*AutoTouch Connect® autoinjector is included in your prescription at no additional cost.

†If you have moderate to severe RA or PsA

ADDITIONAL INJECTION OPTIONS

1

SURECLICK® AUTOINJECTOR



- Single dose
- Designed so the needle is not seen
- Ease of Use Commendation from the Arthritis Foundation
- Does not need to be mixed or prepared

Children must weigh at least 138 lbs to use ENBREL SureClick® Autoinjector. Children who weigh less than 138 lbs should use a different device for ENBREL.

Before injecting ENBREL, you should be trained by a healthcare professional, and you should read the Instructions for Use and Medication Guide.

2

PREFILLED SYRINGE



- Single dose
- Manually injected (you control the rate of injection)
- Ease of Use Commendation from the Arthritis Foundation
- Does not need to be mixed or prepared
- 25-mg syringe: for children weighing at least 68 lbs (recommended dose 0.8 mg/kg weekly for children less than 138 lbs)
- 50-mg syringe: for adults and children weighing 138 lbs or more

3

SINGLE-DOSE VIAL



- Single dose
- Option for children with moderate to severe plaque PsO or JIA weighing less than 138 lbs
- Does not need to be mixed or prepared
- Does not contain natural rubber latex for those with sensitivities

Syringes and needles are required and not supplied with the single-dose vial, and they require a separate prescription from your doctor. **We recommend:**

- A 1-mL Luer-Lock syringe
- A withdrawal needle with Luer-Lock connection, sterile, 22-gauge, length 1 1/2 inch
- An injection needle with Luer-Lock connection, sterile, 27-gauge, length 1/2 inch

Two vials may be required to administer the total prescribed dose. Use the same syringe for each vial. The vial does not contain preservatives; therefore, discard unused portions.

ONLINE VIDEOS*: You can watch our helpful demonstration videos at injectingenbrel.com or scan this QR code for any refreshers about how to inject properly.



*These videos are to supplement the information you got from your doctor on how to take ENBREL. They do not replace the Instructions for Use. Please consult the Instructions for Use when using ENBREL and ask your doctor if you have any questions.

IMPORTANT SAFETY CONSIDERATIONS

ENBREL can lower the ability of your immune system to fight infections. Serious infections have happened in patients taking ENBREL. These infections include tuberculosis (TB) and other infections that can spread throughout your body. Your healthcare provider should test you for TB before starting ENBREL and should monitor you closely for signs and symptoms of TB during treatment with ENBREL.

Please see additional Important Safety Information on pages 34-35 and click here for [Prescribing Information](#) and [Medication Guide](#).

GETTING COMFORTABLE WITH INJECTIONS

Giving yourself an injection can seem intimidating, but you'll find it's actually something you can do. When you get an ENBREL prescription, you should be trained how to inject at your doctor's office, but after that, you can check out these tips to help you along your way.



Allow ENBREL to reach room temperature (30 minutes). Before injecting, use ice to numb the area.



Try injecting in different recommended locations on your body each time.



Listen to music to help you relax.



If injecting a child, offer hugs, praise, and rewards, like stickers or small prizes after each injection.



Inject at the same time each week, like before breakfast on a Monday or after weekly Taco Tuesday night to create a routine that helps you remember to take every injection.

It's important to read the Instructions for Use (IFU) that come with your medication. It covers everything you need to know about how to use ENBREL.* And remember to talk to your doctor about which injection option is right for you or reach out to them if you have any questions.

*This brochure does not replace the IFU for any ENBREL injection option.





ENBREL Support[®] AND PATIENT RESOURCES

WE'RE IN THIS TOGETHER

Your caring team at *ENBREL Support[®]* can help you navigate through available resources during your treatment journey.

SUPPLEMENTAL SUPPORT: Once enrolled, *ENBREL Nurse Partners[™]* are available to provide supplemental injection support and can help you establish a treatment routine.

To reach an *ENBREL Nurse Partner[™]*,* call 1-888-4ENBREL (1-888-436-2735).

When starting on ENBREL, these videos will help you understand the *ENBREL Support[®]* resources available for you. Visit enbrel.com/welcome or scan this QR code to learn more.



**ENBREL Nurse Partners[™]* are nurses by training, but they are not part of your treatment team or an extension of your doctor's office. *ENBREL Nurse Partners[™]* do not inject patients with ENBREL. You will be referred to your doctor's office for clinical advice.



Please see additional Important Safety Information on pages 34-35 and click here for [Prescribing Information](#) and [Medication Guide](#).



ENBREL Support® AND FINANCIAL RESOURCES



THE ENBREL® Co-Pay Card

Commercially insured patients may be eligible for the ENBREL® Co-Pay Program* and pay as little as:

\$5

**PER MONTH
WITH THE ENBREL®
CO-PAY CARD**

Most people who have commercial insurance (insurance that you buy on your own or that is provided through your job) are eligible. See enbrelsupport.com for full eligibility details. If you qualify, you will be sent your Co-Pay Card in the mail to use when you fill your ENBREL prescription.

Other options may be available for those without commercial insurance. Call us to learn more.

WANT TO GET STARTED WITH ENBREL Support®?

It's simple to sign up:

- Scan this QR code to visit ENBRELsupport.com
- Call **1-888-4ENBREL (1-888-436-2735)**
Monday – Friday, from **8AM to 8PM (ET)**



ABOUT TO TURN 65?

Call **1-888-4ENBREL** and talk with one of our Medicare Solutions Specialists. When you switch from private insurance to Medicare, your Co-Pay Card eligibility changes. Our specialists can walk you through those changes and can help you figure out the best plan moving forward.

MEDICARE SOLUTIONS SUPPORT

Our team of Medicare Solutions specialists can help you understand your Medicare coverage, including:

- The doughnut hole and anticipating annual out-of-pocket costs for ENBREL.
- Screening for Extra Help (Low-Income Subsidy) eligibility or providing referral assistance to third-party nonprofit foundations.†



To learn more, call **ENBREL Support®**
at **1-888-4ENBREL (1-888-436-2735)**.

COVERAGE GAP

To understand potential Medicare costs during the coverage gap, please visit: <https://www.medicare.gov/drug-coverage-part-d/costs-for-medicare-drug-coverage/costs-in-the-coverage-gap>

*Terms, conditions, and program maximums apply. Other restrictions may apply. See enbrelsupport.com for full eligibility details. This program is not open to patients receiving prescription reimbursement under any federal, state, or government-funded healthcare program. Not valid where prohibited by law.

†Support provided through independent charitable patient assistance programs; program eligibility is based on the charity's criteria. **ENBREL Support®** has no control over independent, third-party programs and provides referrals as a courtesy only.

INDICATIONS

ENBREL is indicated for reducing signs and symptoms, keeping joint damage from getting worse, and improving physical function in patients with moderately to severely active rheumatoid arthritis.

ENBREL can be taken with methotrexate or used alone.

ENBREL is indicated for reducing signs and symptoms, keeping joint damage from getting worse, and improving physical function in patients with psoriatic arthritis. ENBREL can be used with or without methotrexate.

ENBREL is indicated for chronic moderate to severe plaque psoriasis (PsO) in children 4 years and older and adults who may benefit from taking injections or pills (systemic therapy) or phototherapy (ultraviolet light).

ENBREL is indicated for reducing signs and symptoms of moderately to severely active polyarticular juvenile idiopathic arthritis (JIA) in children ages 2 years and older.

ENBREL is indicated for reducing signs and symptoms in patients with active ankylosing spondylitis.

IMPORTANT SAFETY INFORMATION

What is the most important information I should know about ENBREL?

ENBREL is a medicine that affects your immune system. ENBREL can lower the ability of your immune system to fight infections. Serious infections have happened in patients taking ENBREL. These infections include tuberculosis (TB) and infections caused by viruses, fungi, or bacteria that have spread throughout the body. Some patients have died from these infections. Your healthcare provider should test you for TB before you take ENBREL and monitor you closely for TB before, during, and after ENBREL treatment, even if you have tested negative for TB.

There have been some cases of unusual cancers, some resulting in death, reported in children and teenage patients who started using tumor necrosis factor (TNF) blockers before 18 years of age. Also, for children, teenagers, and adults taking TNF blockers, including ENBREL, the chances of getting lymphoma or other cancers may increase. Patients with RA may be more likely to get lymphoma.

Before starting ENBREL, tell your healthcare provider if you:

- Have any existing medical conditions
- Are taking any medicines, including herbals
- Think you have, are being treated for, have signs of, or are prone to infection. You should not start taking ENBREL if you have any kind of infection, unless your healthcare provider says it is okay
- Have any open cuts or sores
- Have diabetes, HIV, or a weak immune system
- Have TB or have been in close contact with someone who has had TB
- Were born in, lived in, or traveled to countries where there is more risk for getting TB. Ask your healthcare provider if you are not sure

- Live, have lived in, or traveled to certain parts of the country (such as, the Ohio and Mississippi River valleys, or the Southwest) where there is a greater risk for certain kinds of fungal infections, such as histoplasmosis. These infections may develop or become more severe if you take ENBREL. If you don't know if these infections are common in the areas you've been to, ask your healthcare provider
- Have or have had hepatitis B
- Have or have had heart failure
- Develop symptoms such as persistent fever, bruising, bleeding, or paleness while taking ENBREL
- Use the medicine Kineret (anakinra), Orencia (abatacept), or Cytoxan (cyclophosphamide)
- Are taking anti-diabetic medicines
- Have, have had, or develop a serious nervous disorder, seizures, any numbness or tingling, or a disease that affects your nervous system such as multiple sclerosis or Guillain-Barré syndrome
- Are scheduled to have surgery
- Have recently received or are scheduled for any vaccines. All vaccines should be brought up-to-date before starting ENBREL. Patients taking ENBREL should not receive live vaccines.
- Are allergic to rubber or latex
- Are pregnant, planning to become pregnant, or breastfeeding
- Have been around someone with chicken pox

What are the possible side effects of ENBREL?

ENBREL can cause serious side effects including: New **infections** or worsening of infections you already have; **hepatitis B** can become active if you already have had it; **nervous system problems**, such as multiple sclerosis, seizures, or inflammation of the nerves of the eyes; **blood problems** (some fatal); new or worsening **heart failure**; new or worsening **psoriasis**; **allergic reactions**; **autoimmune reactions**, including a lupus-like syndrome and autoimmune hepatitis.

Common side effects include: Injection site reactions and upper respiratory infections (sinus infections)

In general, side effects in children were similar in frequency and type as those seen in adult patients. The types of infections reported were generally mild and similar to those usually seen in children.

These are not all the side effects with ENBREL. Tell your healthcare provider about any side effect that bothers you or does not go away.

If you have any questions about this information, be sure to discuss them with your healthcare provider. You are encouraged to report negative side effects of prescription drugs to the FDA. Visit www.fda.gov/medwatch, or call 1-800-FDA-1088.

Please click here for [Prescribing Information](#), [Medication Guide](#) and [Instructions for Use](#).



Scan here for the AutoTouch Connect® User Manual for instructions for using the Bluetooth® features of the AutoTouch Connect® autoinjector.

The Bluetooth® word mark and logos are registered trademarks owned by Bluetooth SIG, Inc., and any use of such marks by Amgen is under license.



TAKE THE NEXT STEP IN TREATMENT
Ask your doctor if **ENBREL** is right for you.

STILL HAVE QUESTIONS? **GO TO ENBREL.COM** TO LEARN MORE.

IMPORTANT SAFETY CONSIDERATIONS

Before starting ENBREL, tell your healthcare provider about all of your health conditions, including if you have an infection, have seizures, any numbness or tingling, or a disease that affects your nervous system such as multiple sclerosis; have heart failure, are scheduled to have surgery, and/or are scheduled for any vaccines.

Please see additional Important Safety Information on pages 34-35 and click here for [Prescribing Information](#) and [Medication Guide](#).

AMGEN[®]

©2022 Amgen Inc., Thousand Oaks, CA 91320
All rights reserved. USA-916-83414